

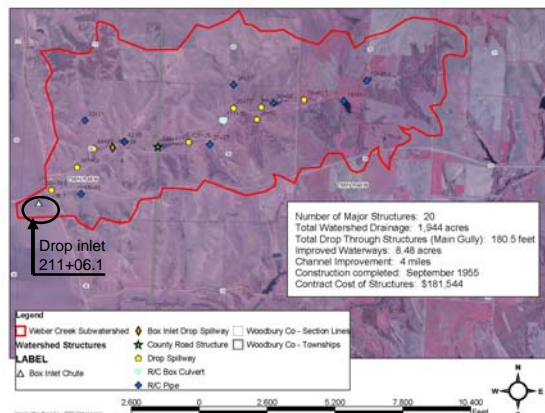
The Four R's

Woodbury County's Approach

Weber Creek Sub Watershed part of the PL 534 Little Sioux watershed

Case study
Woodbury County

Weber Creek Sub-Watershed



Just focus on this one structure

- What are the sponsors liabilities to:
Land owners and the taxpayers?
- This problem was discovered by inspection.
- What is the sponsors role in inspection, record keeping and data base information?
- The responsibilities are established in the legal document agreed on and recorded before construction (this one is dated in 1955)



Let's get to the solving the problem

- Who should the sponsors turn to for help?
- What agreements are in place?
- Will NRCS always be there?
- Can county engineers or private engineers solve the problem?
- What "standard and specs" will be met?
- Who will oversee the work?

Repairs were made.
\$1500 was spent...



But...

- The structure is still undermined.
- NRCS provided the sponsors with detail plans for "rehab".
- Estimated cost \$50,000 to meet "50 year life".
- What is the sponsor's next step?



Looking for Answer\$

Who is available to help sponsors look for these answers?

- IOWA WATERSHEDS
- NATIONAL WATERSHEDS
- R C & Ds
- CDI and NACD
- DSC and NRCS
- Private groups and organizations



Federal Programs

\$ CONSERVATION INNOVATION GRANTS

State Programs:

\$ WATERSHED IMPROVEMENT FUND

\$ WATERSHED DEVELOPMENT AND PLANNING ASSISTANCE GRANTS

Woodbury Applied and Received the Grant

SFY 2009
WATERSHED DEVELOPMENT AND PLANNING ASSISTANCE GRANT
PLAN OF WORK

Project Name: **Weber Creek Development and Planning Project**

Project Number:

Soil and Water Conservation District: **Woodbury**

Reporting Period: **December 1, 2008 to November 31, 2009**

Date Approved: _____, 2008

Reporting Individual: **Richard J. Madsen**

Preparer's Signature: _____

Richard J. Madsen

SWCD Chairperson's Signature: _____

James D. Brown

The Goal of this Grant

Answer the Question "What needs to be done to be ready for the 4 R's."

What we have done.

- Weber Creek Watershed coordinator Dick Madsen
- Inspections are current
- Data Base is up to date & capable of sorting
- Taken the Weber Creek project on the road to:
 - Local Working Group Meeting
 - Iowa Water Conference
 - Region 1 Conference

Systematic Approach to determining the 4 R's

Repair vs. Rehabilitation vs. Rebuild vs. Retire

To accomplish this we need to study:

- Liability
- Easements
- O & M documents
- Engineering Assistance with or without Little Sioux future funding
- Determining the "value" of structures
- 50 year "Life"
- MOU with Sponsors and "SCS"

Concerns

- Decommissioning
- Easement Releases
- Repair dollars from taxation
- Help from Watershed groups Iowa and National
- Repair "standard and specs"
- Multiple problems with one structure
- Repairs current
- Prioritize? Structure vs. watershed
- Interpret the old easements / agreements

This project will

Develop a protocol/checklist for addressing existing and potential performance degradation of aging watershed flood and sediment control structures.

This "protocol" will be portable. Use it to analyze and compare watersheds. Then establish priorities and accurate estimates for future funding requests.

Maybe an option would be to let the structures go and prepare for the tourist visiting the Great Canyons of Western Iowa!

